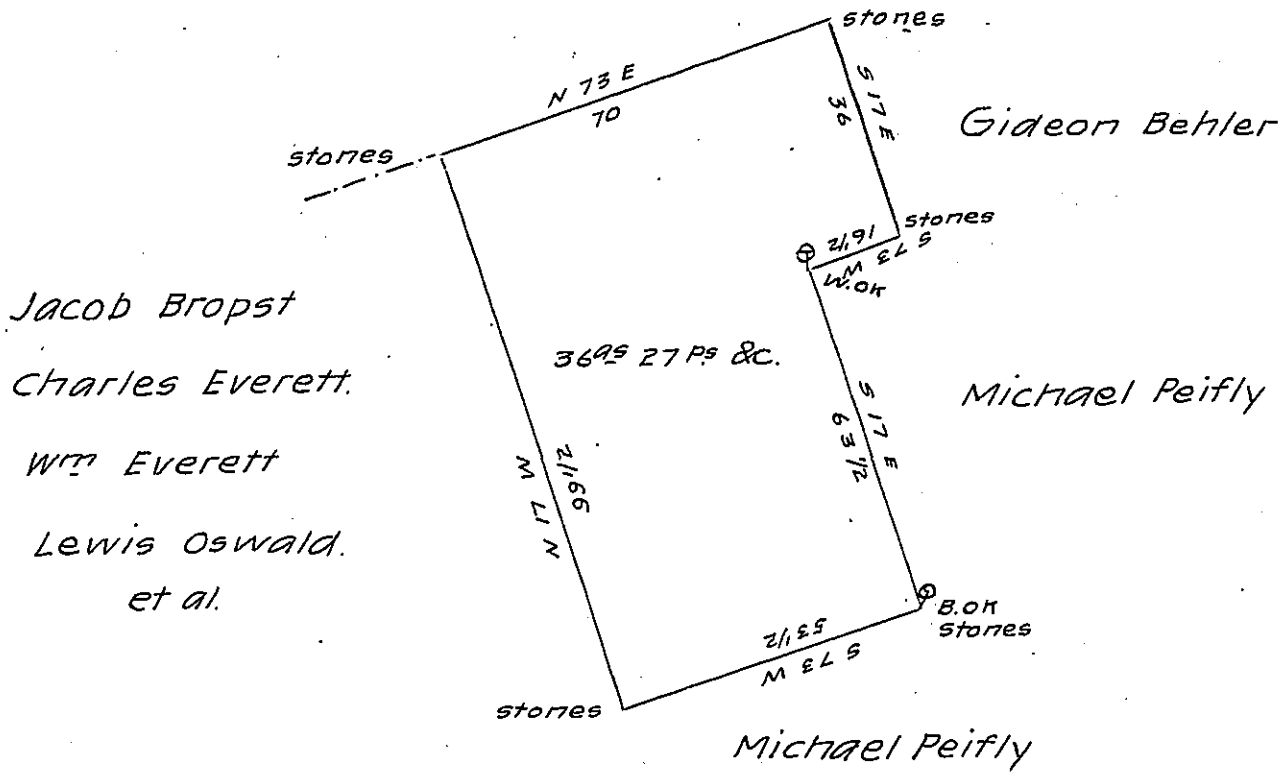


Samuel Reitz, Elias Krum.



Jacob Bropst
 Charles Everett.
 Wm Everett
 Lewis Oswald.
 et al.

Draft of a tract of land containing 36 acres and 27 perches
 and allowance of six per cent, for roads &c. situate in Lynn town-
 ship, in the County of Lehigh, surveyed Dec 28th 1828 by — then
 — Surveyor, in pursuance of an Application No. 3898 to Thomas
 Everett, Dated the 18th day of March 1769.

I hereby certify that the foregoing is a correct Copy of a
 survey filed amongst the Records of the County Surveyor's Of-
 fice, of this County and that it has been examined by me
 and found to be correct

Geo. Blank C.S.

To J. M. Campbell Esq
 Surveyor General.

IN TESTIMONY that the above is a copy of the original remaining on file in
 the Department of Internal Affairs of Pennsylvania, made
 conformably to an Act of Assembly approved the 16th day of
 February, 1833, I have hereunto set my Hand and caused
 the Seal of said Department to be affixed at Harrisburg,
 this Twentieth day of October 1904

Loaer P. Brown
 Secretary of Internal Affairs.